



This Issue

- PEP Company Update **P.1**
- Recent Projects Update **P.2**
- Major Projects **P.3**
- Staff News & Other News **P.4**

New Grandstand Wins Award



PEP were appointed by Kier Eastern as part of their design and build team to design a new grandstand for Huntingdon racecourse, providing new facilities for the jockeys, stewards and members at ground and first floor levels. The building is now complete and was selected as a finalist in the East Anglian Local Authority Building Control "Building Excellence Awards 2010" for best Commercial Building. The award recognised the high standards of design, construction and workmanship.

PEP Fresh New Look and Website

We are pleased to announce our new website and corporate logo which have been rolled out to create a fresh look for the Company, reflecting the modern, vibrant approach to engineering that PEP is respected for.

If you work with us regularly you may have already noticed the change of logo and may have already visited our new website:

www.pepgroup.co.uk

If not, then please take a few moments to visit the site and find out more about us.



Our new website.



Our new logo.

More Satisfied Customers - Another Diamond Award

Despite the economic downturn over the past couple of years, and the squeeze on project costs and fees, PEP have maintained the high level of service upon which our reputation has been built, ensuring our client base remain satisfied with the quality, speed and value for money we provide.

For 5 years between 2002 and 2007 we attained the gold award for Customer Satisfaction in a survey carried out on a random selection of our client base by our independent QA ISO 9001:2000

auditors. Whilst this level of achievement was exceptional, we reported in our last newsletter that the 2008 survey had attained the coveted Diamond award.

Although we felt it would be very difficult to maintain the near perfect levels of service this represents, the results of the 2009 and 2010 survey confirm that we have won the Diamond award for a second year running.



Did You Know?

The Flood and Water Management Act 2010 was passed by Parliament in April and includes a section, Schedule 3, dedicated to sustainable drainage. It covers a range of measures to overcome current problems and lists the following aims to manage rainwater (including snow and other precipitation);

- Reducing damage from flooding
- Improving water quality
- Protecting and improving the environment
- Protecting health and safety
- Ensuring the stability and durability of drainage systems

Did You Know?

As well as restricting outfall flow rates, SUR1 of the Code for Sustainable Homes requires any post-development increase in volume of surface water run-off to be either discharged entirely via soakaways (i.e. infiltration) or, failing this, to be captured in a rainwater harvesting system which must be plumbed into the housing units for washing machine and WC use. The latter approach is the only viable option on the majority of clay sites, and can result in significant additional costs to developers, particularly for former greenfield areas which had negligible run-off previously.

Simply limiting the surface water discharge rate (while providing sufficient temporary storage to accommodate the storm run-off while it slowly drains off site) will not provide compliance, as this does not fundamentally prevent any increase in volume from being discharged.

Open University Framework

PEP, alongside their partners SDC Construction and Ridge, have been highly commended by the Open University for the ongoing success of the HEFC funded Construction Framework agreement, which is responsible for delivering five capital works projects over a three year period. The total construction value of the projects is approx. £25million. Projects have included:

Catering Hub

The refurbished and extended Catering Hub building has successfully re-opened following significant structural alterations to the original building. This involved a complicated sequence of temporary works to enable removal of numerous internal structural walls, plus a major steel framed extension and drainage works. Alterations to the original building were complicated by the poor condition



(Ridge Architects)

of some parts of the structure and numerous piecemeal extensions that had been undertaken in the past.

Building 12

Fit-out of the Open University's new state-of-the-art estates building has finished following successful completion of the building frame and cladding. The building comprises a two storey RC flat slab frame, although the structure has been designed to accommodate an additional office floor at roof level should a future extension

be required. The building is clad in a combination of traditional brickwork and curtain walling. It incorporates many sustainable features including ground source heat pump, natural ventilation, green roof, solar chimneys, and significant arrays of PV and solar panels.

Other projects have included major refurbishments to the Maths and Computing building, Wilson B, Offices Six and M Block.

Social Housing

PEP remain very active on a number of social housing schemes.



(Cole Thompson Anders Architects)

Wixams Village, Bedford - 60 number, two and three storey timber framed housing units on four land parcels, including adopted highways and drainage works.

Loves Farm, St Neots - 90 number, two and three storey timber frame housing units on four land parcels, including adopted highways and drainage works.

Talbot Way, Letchworth - 60 number, two and three storey timber frame housing units, including adopted highways and drainage works.

Just the Ticket

Appointed by South West Trains & Network Rail by KVB Architects.



The main core of the design work has arisen from the requirements of the Disability Discrimination Act, and the need to modify a number of stations where non-compliance with the DDA Act were identified, including Walton-on-Thames, Raynes Park, Norbiton and New Malden. In addition to the DDA works, extensive refurbishment and improvements (eg cycle parking) were carried out as part of the station franchise programme.

NHS Procure 21 Healthcare Projects

Thanks to the continued support of Kier Health and successful tendering, our experience in the healthcare sector has continued to grow in strength recently, with numerous projects currently in house at various stages of design & construction. We have a great deal of experience in the design of units in the Healthcare sector, in particular the specialist design requirements of Mental Health Hospitals. A selection of our current P21 projects:

- St.Clements Hospital, Ipswich
- Heath Road Hospital, Ipswich
- Wedgewood Hospital, Bury St. Edmunds
- Newham Medical Centres, London
- Goodmayes Hospital, London
- Highfield Hospital, Oxford
- St.Martins Hospital, Canterbury
- Manor House Hospital, Aylesbury

Manor House Hospital, Aylesbury



(Nightingale Architects)

PEP are undertaking the civil and structural engineering design of this £35m new build hospital facility to provide an 84 bed unit dealing with acute and older person care, including infrastructure and a new energy centre. The site is highly complex with a series of differing building levels and retaining walls to cater for the 10m fall across the plot.

Work In Full Progress on £50m Clapham One Development

PEP have been novated by Cathedral Group as Consulting Civil & Structural Engineers on this prestigious development in the centre of Clapham, for London Borough of Lambeth, delivering a public sector facility on a PPP model. The development is on two sites approximately 200m apart. United House are the contractor responsible for delivering the new development on the Clapham High Street (MSH) site, which includes an underground car park, three-storey library with open spiral ramp extending from the basement to first floor level, a performance area in the basement with a 9m high ceiling, and a ten storey residential block over.

The library shares its ground floor entrance with the PCT/PCC facilities. The ten-storey residential block is supported by 950mm thick transfer slabs



(Studio Egret West Architects)

PEP Steps Up Work In the Gym

After successfully acting as Structural consultants for the alterations and improvement works to four centres in the London Borough of Hounslow, The Clarkson Alliance has appointed PEP as the Civil & Structural Engineers for Capital improvement works to three leisure centres in Oxford and three centres in the London Borough of Enfield. The works are a joint venture between Oxford City Council, Enfield Borough Council and 'Fusion Lifestyle' the leisure centre operator.

Fusion is helping Local Authorities match the standard of their leisure centres and sports facilities with those in the private health club sector, through improvements, alterations and upgrades to the existing facilities.

By encouraging more people to make use of the facilities and increasing revenue, Fusion is able to cut its management fees, and the authority can use that money to modernise and improve its leisure centres and community halls.

PEP's Ongoing Commitment to Training

PEP continue their commitment to give school leavers the opportunity to train as an Engineer or Technician even through the current economic turmoil. The new trainees are sent to technical college on a day release basis to obtain the relevant qualifications in Structural Engineering, whilst working in the office and on site the remainder of the week. This enables them to gain valuable 'real life' experience of a consultants office and not just the theory taught in college.



As part of PEP's commitment to the progression of young Engineers we also judge the submissions for the final year HNC course project at Oaklands College and sponsor an annual prize for the winning student team.

Directors Brian Brooks and Gary Redman are seen here with the Course Tutor at Oaklands, awarding the prizes and shield for the winning project 2010.



www.pepgroup.co.uk
01442 828411
enquiries@pepgroup.co.uk



(idp Architects)

Shard End Birmingham

Barratt West Midland have appointed PEP as Consulting Engineers to provide civil & structural advice and design for a commercial development comprising a 2 storey library and two 3 storey mixed use blocks with retail units at ground floor and residential accommodation above.

The construction work commenced by Greswolde in September 2010, as part of the Shard End Urban Village re-development.

Staff News



Roy Jarrold retires as a Director of PEP as of April 2010

Roy now acts as a Consultant. Stefan Abramian, Brian Brooks and Gary Redman remain as the Company Directors. To ensure a smooth transition of current projects and future enquiries, please contact one of the above Directors.



Nigel Matthews becomes Director Designate

Nigel, previously an Associate with PEP, has been promoted to Director Designate. Nigel has worked on some very large projects during his time with PEP, mostly in excess of £25m, and of late has been heavily involved in numerous Procure 21 new Hospital schemes.



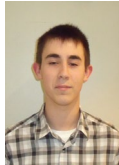
Tiago Bailey achieves Chartered Engineer status

Congratulations to Tiago Bailey who was employed as a graduate Engineer by PEP, and has now passed his CM exam to become a Chartered Engineer and full Member of the Institution of Structural Engineers.



Joanne Patrick joins as Structural Engineer

We are pleased to announce the addition of a new Engineer to our ever expanding department of experienced Structural Engineers.



Jack Appleton joins as Trainee Technician

Jack Appleton has joined PEP as our latest trainee Technician. Jack has just left Tring Secondary School, and will be attending the Oaklands technical college to study for an ONC and HNC in Structural Engineering.

London Fire Brigade

PEP were appointed by Balfour Beatty as Consulting Engineers to provide civil & structural advice and design on nine proposed new fire stations for London Fire Brigade (LFB) under a £50m PFI scheme.

The team, (which includes Mansell Construction, 3D Reid & Seymour Harris Architectural Practices and Ferguson - Brown, M & E Engineers) have been successful in reaching ISRS stage of the PFI bid.



Essex Primary School

Work is nearing completion at Essex Primary School, where we have been acting as consultants for Jerram Falkus Construction Limited, long established contractors from East London, on behalf of the London Borough of Newham.

The project is part of the B.S.F. scheme for Newham, headed by the Newham Transformation Partnership, in which Jerram Falkus work in association with Laing O'Rourke.

Costs for the project are £5.4m, and works involve extending 12 classrooms in 4 blocks, extending the main hall and adding a new 2 storey kitchen and staffroom block, all within a fully functioning school of 1200 pupils.

In addition to the above we are also involved with Jerram Falkus on a similar size project at The Avenue School, under the same partnership arrangement with Newham, which is currently at stage two design.

New Appointment

Cathedral Group has appointed PEP as Consulting Civil & Structural Engineers on their new £30m residential/commercial development, The Rise in Deptford.

